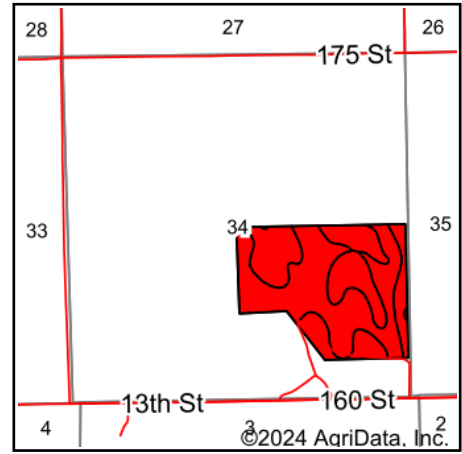
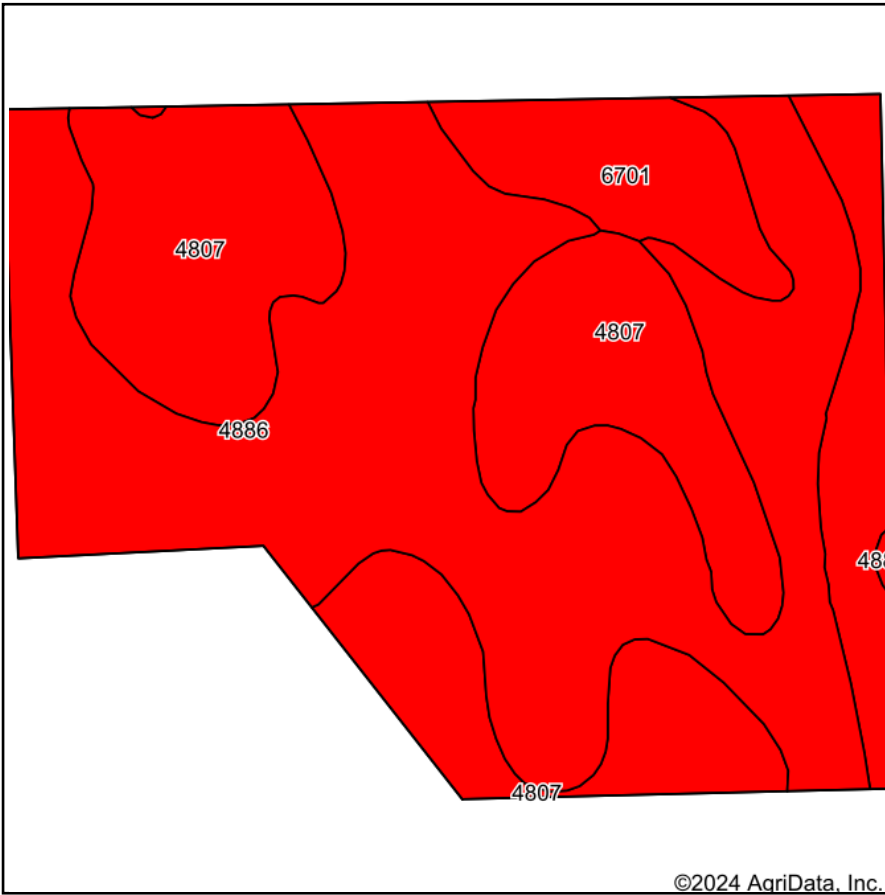


# Soils Map



State: **Nebraska**  
 County: **Platte**  
 Location: **34-17N-2W**  
 Township: **Loup**  
 Acres: **105.48**  
 Date: **7/30/2024**



Maps Provided By:  
  
 CUSTOMIZED ONLINE MAPPING  
 © AgriData, Inc. 2023 [www.AgriDataInc.com](http://www.AgriDataInc.com)



Soils data provided by USDA and NRCS.

Area Symbol: NE141, Soil Area Version: 21

Code	Soil Description	Acres	Percent of field	SRPG Legend	Non-Irr Class *c	Irr Class *c	SRPG	Alfalfa hay Tons	Alfalfa hay Irrigated Tons	Corn Bu	Corn Irrigated Bu	Grain sorghum Bu	Grain sorghum Irrigated Bu	Soybeans Bu	Soybeans Irrigated Bu	*n NCCPI Soybeans
4886	Valentine-Thurman complex, 3 to 9 percent slopes	56.02	53.1%		Vle	IVe	30	2	4	48	104	50	74	19	25	2
4807	Valentine fine sand, rolling	41.78	39.6%		Vle		20									1
6701	Thurman loamy fine sand, 1 to 3 percent slopes	7.68	7.3%		IIle	IIle	35	2	4	56	126	56	109	23	35	3
<b>Weighted Average</b>					<b>5.78</b>	<b>*-</b>	<b>26.4</b>	<b>1.2</b>	<b>2.4</b>	<b>29.6</b>	<b>64.4</b>	<b>30.6</b>	<b>47.2</b>	<b>11.8</b>	<b>15.8</b>	<b>*n 2</b>

\*n: The aggregation method is "Weighted Average using all components"

\*c: Using Capabilities Class Dominant Condition Aggregation Method

\*- Irr Class weighted average cannot be calculated on the current soils data due to missing data.

Soils data provided by USDA and NRCS.