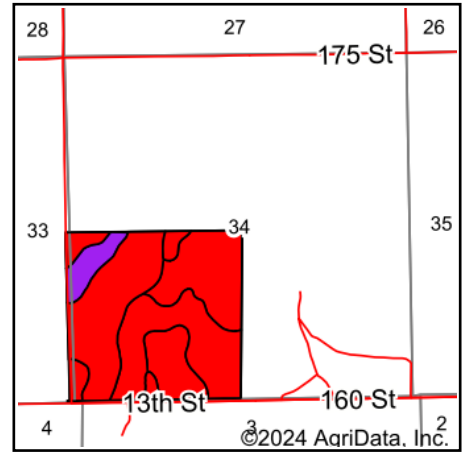
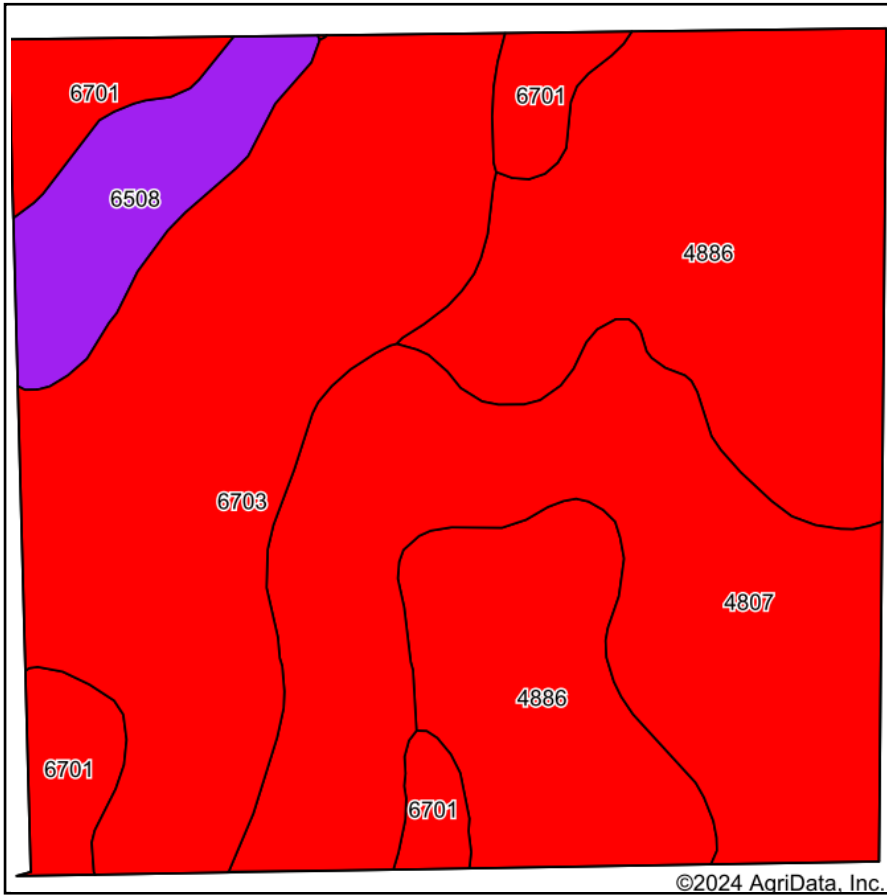


# Soils Map



State: **Nebraska**  
 County: **Platte**  
 Location: **34-17N-2W**  
 Township: **Loup**  
 Acres: **160**  
 Date: **7/30/2024**



Maps Provided By:



© AgriData, Inc. 2023

www.AgriDataInc.com



Soils data provided by USDA and NRCS.

Area Symbol: NE141, Soil Area Version: 21

Code	Soil Description	Acres	Percent of field	SRPG Legend	Non-Irr Class *c	Irr Class *c	SRPG	Alfalfa hay Tons	Alfalfa hay Irrigated Tons	Corn Bu	Corn Irrigated Bu	Grain sorghum Bu	Grain sorghum Irrigated Bu	Oats Bu	Pasture AUM	Pasture Irrigated AUM	Soybean Bu
4886	Valentine-Thurman complex, 3 to 9 percent slopes	50.34	31.5%		Vle	IVe	30	2	4	48	104	50	74				
6703	Thurman loamy fine sand, 2 to 6 percent slopes	44.85	28.0%		IVe	IVe	33	2	4	51	109	51	94				
4807	Valentine fine sand, rolling	42.74	26.7%		Vle		20										
6701	Thurman loamy fine sand, 1 to 3 percent slopes	12.37	7.7%		IIIe	IIIe	35	2	4	56	126	56	109				
6508	Blendon fine sandy loam, 0 to 2 percent slopes	9.70	6.1%		IIIs	IIe	59	3	6	65	137	59	107	55	3	10	
<b>Weighted Average</b>					<b>4.96</b>	<b>*-</b>	<b>30.3</b>	<b>1.5</b>	<b>3.1</b>	<b>37.7</b>	<b>81.3</b>	<b>37.9</b>	<b>64.5</b>	<b>3.3</b>	<b>0.2</b>	<b>0.6</b>	<b>1</b>

\*n: The aggregation method is "Weighted Average using all components"

\*c: Using Capabilities Class Dominant Condition Aggregation Method

\*- Irr Class weighted average cannot be calculated on the current soils data due to missing data.

Soils data provided by USDA and NRCS.