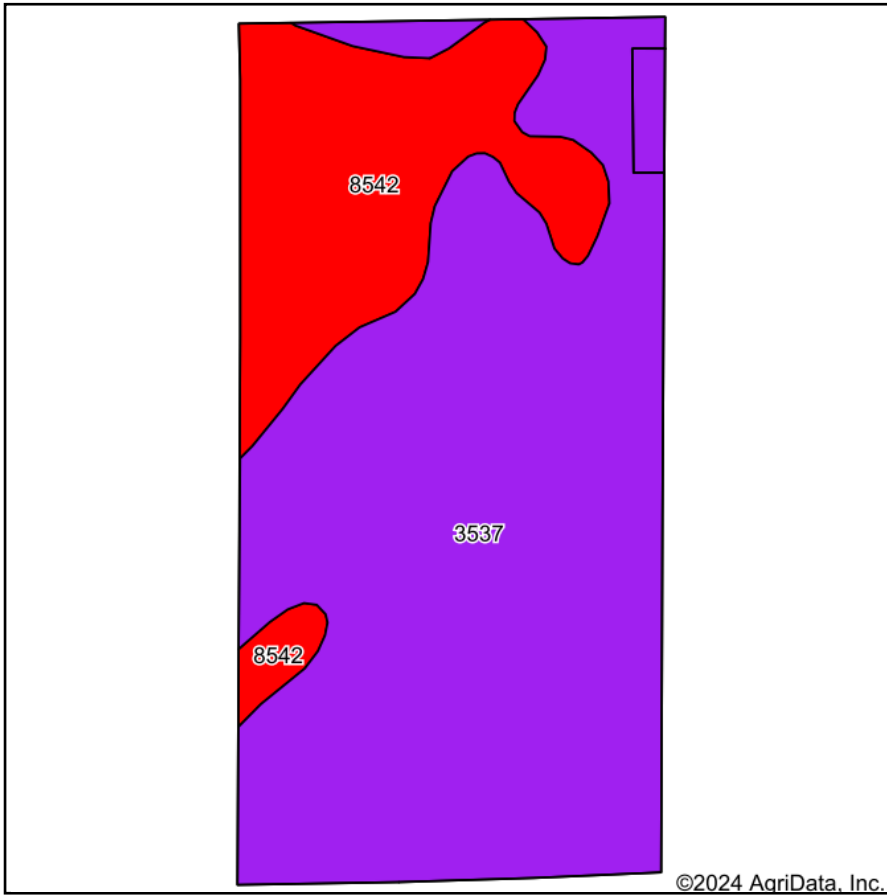
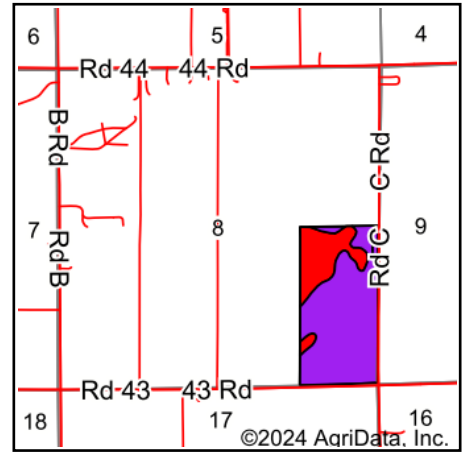


Soils Map



Soils data provided by USDA and NRCS.



State: **Nebraska**
 County: **Butler**
 Location: **8-16N-1E**
 Township: **Alexis**
 Acres: **76.22**
 Date: **6/25/2024**



Maps Provided By:



Area Symbol: NE023, Soil Area Version: 23

Code	Soil Description	Acres	Percent of field	SRPG Legend	Non-Irr Class *c	Irr Class *c	SRPG	Alfalfa hay Tons	Alfalfa hay Irrigated Tons	Corn Bu	Corn Irrigated Bu	Grain sorghum Bu	Grain sorghum Irrigated Bu	Soybeans Bu	Soybeans Irrigated Bu	Winter wheat Bu
3537	Gibbon silty clay loam, occasionally flooded	57.71	75.7%		IIw	IIw	54	5	6	91	142	97	129	37	46	37
8542	Ovina loamy fine sand, rarely flooded	18.51	24.3%		IIIw	IIIw	50	3	5	63	138	63	113			25
Weighted Average					2.24	2.24	53	4.5	5.8	84.2	141	88.7	125.1	28	34.8	34.1

*n: The aggregation method is "Weighted Average using all components"

*c: Using Capabilities Class Dominant Condition Aggregation Method

Soils data provided by USDA and NRCS.